

Year One

Summer 2 2025



Mathematics

This half term we will be recapping partitioning two digit numbers and using partitioning to add and subtract. We will develop our problem-solving skills by finding the missing numbers in addition and subtraction number sentences and conduct mathematical investigations that involve collecting, sorting and interpreting data. We will consolidate our year's learning by solving 'greater than' and 'less than' problems with all four operations.

Writing

Taking inspiration from the real-life stories of orangutans and other endangered primates suffering the effects of deforestation, we will write information, persuasive letters and imaginative stories, set in the rainforest. We will then journey to the Kenyan village where 'Lila' lives to compare the lushly green and fertile land of the rainforests to drought-stricken Africa. Through drama, we will empathise with Lila, before writing new versions of the story.

Meet the Team!

Team Leader: Nikki

Teaching Staff: Nikki, Whitley, Mariam

Support Staff: Maria, Riece, Sarah,
Elizabeth, Rid, Julienne



Supporting Your Child's Learning

We have been so impressed with the effort the children have been putting into their phonics so thank you! We will continue to send home spellings and we will be having weekly spelling tests to get the children ready for year two! Please continue to read with your child on a daily basis. We have added a large selection of books to the children's e-libraries so they can choose the books they would like to read. To support comprehension, you will find questions to ask your child, in the back of the e-books. Please also continue to access Mathletics.

Science

Our science focus, this half term, will be continue to be plants and trees. We will identify and label the parts of common plants and trees, and learn to distinguish between deciduous and evergreen trees. We will enjoy walks in our forest school, identifying the wide variety of native plants and trees and investigate what plants need to thrive.

Reading

Phonics will continue on a daily basis this half term as we develop fluency extend our knowledge of alternative sounds and irregular common exception words. Our guided group reading will continue 3 days per week and we will also hone our comprehension skills with an extra, comprehension-focused reading session each week.

Geography

This half term we will be exploring why we have hot and cold places on our planet. We will be learning about why the rainforest is so damp and hot and why the polar ice caps are so freezing! Alongside this we will be looking at why different animals live in different parts of the world.

PE

Year 1 will have Dance on Tuesdays and PE on Thursdays. Please ensure that your child comes in to school wearing their PE uniform. Our PE focus for this half term is 'Athletics', where children will develop their running, jumping, throwing and catching skills in preparation for Sports Day!

Dance

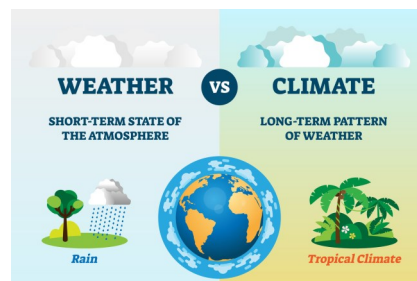
In dance this term, we will learn and perform short dances and movement patterns linked to various dance styles.

PSHE

In PSHE, our focus will be 'changes'. We will discuss life cycles and think about how our bodies have changed since we were babies. We will also be learning how to correctly identify the different parts of the body. We will explore and explain the hypothesis, 'When I learn, I grow'.

Computing

This half term we will be using the 'Scratch Jr' programming app to create our own games. The children will learn to select and join commands in a sequence, change values, apply algorithms to a 'Sprite' and design and test their own games!



Art & DT

Year 1 will start their Torridon clay journey this term. We will learn through play and experiment with lots of different shape altering techniques including rolling, squeezing and pinching. We will learn about the Kenyan ceramic artist Magdalene Odundo and explore some of her fascinating and colourful works of Art.

Music

This half term, the year 1 children will be looking at music that is about the weather. They will listen to pieces of music composed by a variety of composers that depict weather events. They will work in groups to compose their own piece of music that is based on the weather, using their prior learning around tempo, texture and dynamics to enhance their compositions. They will perform their completed pieces to their class.

RE

In RE we will be exploring what places are special around the world. We will revisit learning about different places of worship, their features and what makes them unique.

