



Torridon  
Primary School

### **Reading, Writing and Maths Learning**

All children will access these subjects with their mainstream class. Please refer to their year group curriculum bulletin for information about their learning.

### **Social Stories and Socialising**

Each week, children will continue to look at social stories to help them problem solve or think about how to handle issues that have arisen during the week.

They will also have socialising sessions which focus on social skills to strengthen the development of their friendships.

### **Computing**

The children will be introduced to the micro:bit as an input, process and output device that can be programmed. They will familiarise themselves with the device itself and create their own programs.

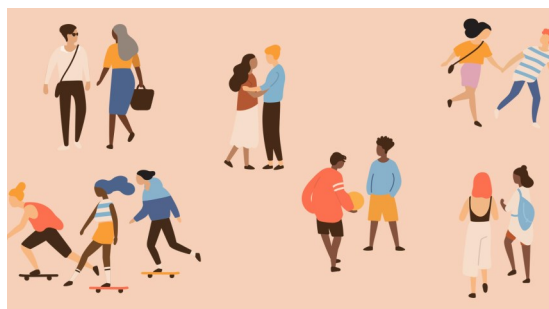
### **Meet the Team!**

**Team Leader:** Ciara

**Teaching Staff:** Ciara & Sai

**Support Staff:** Aaliyah, Azena, Jamie, Raziya and Lucie

## *Relationships*



### **Supporting Your Child's Learning**

Please encourage your child to read at least five times per week. Please also ensure your child logs into their Mathletics, TTRS and spag.com accounts using their login details. Activities are set every Friday. It is important that the children learn their spelling words weekly, as this will really help with their reading and writing.

## Resource Base - Summer 1

### **PSHE and Life Skills**

We will be focusing on developing the children's understanding of relationships this half-term. They will learn about different families and will discuss how we respect differences. We will also learn about friendships and the qualities we would like to see in a friend and how we can be a good friend to others.

### **Interventions**

Blue Pathway children will continue to have weekly sessions to learn about the Zones of Regulation and expected and unexpected behaviour. They will think about how their behaviour affects other people. They will also continue to have fine motor skills and handwriting interventions. The resource base team and our speech and language therapist will also be delivering group and individual interventions outlined in your child's EHCP.

### **PE**

Blue Pathway children will access P.E with their mainstream class. Please refer to their year group curriculum bulletin for information about the days your child need to come in in their PE uniform.

# Creative Subjects

## **Art**

In Art this term we will be exploring clay. We will learn about ways to make clay change shapes. We will make some pots to grow things in.

## **Music**

The children will be learning to use music technology to compose and manipulate music and sounds. They will cover step sequencing and real-time sequencing of both melodic and percussion MIDI instruments.

## **Dance**

In dance this term we will be exploring dance from around the world using props. We will learn and develop rhythms, work