



Hazelbank Road, Catford, London, SE6 1TG

Headteacher: Manda George

Telephone: 0208 697 2762

Email: [admin@torridonprimary.lewisham.sch.uk](mailto:admin@torridonprimary.lewisham.sch.uk)

8<sup>th</sup> October 2021

Dear parents and carers,

It has been fantastic to be able to welcome you back onto the playground. Thank you for supporting us in making it run so smoothly. A reminder that gates open in the morning at **8:45am** and are closed at **8:55am**. Please ensure that your child arrives in time so that they are ready to learn – if your child arrives late it can cause anxiety for your child and they miss learning time.

Individual and class photographs are taking place on **Thursday 14<sup>th</sup> October**. If your child usually comes in their PE uniform on that day, please send him or her in wearing normal school uniform. If you would like sibling photographs, these will be available after school in the year 5 hall. You will be able to queue outside the building with your children from 3:15pm.

There has been some great learning taking place in school this week relating to black history month. Year 3 have been learning all about the fantastic achievements of Sybil Phoenix, who lived in Lewisham, and who was the first black lady to be awarded an MBE in 1973. Year 6 have been learning about Dianne Abbott, who was the first black woman to be elected to the British parliament. Look out for some photos of the wonderful displays in next week's newsletter.

As always, please do not hesitate to get in touch if there is anything you would like to discuss.

Have a lovely weekend.

Best wishes

Manda George  
Headteacher



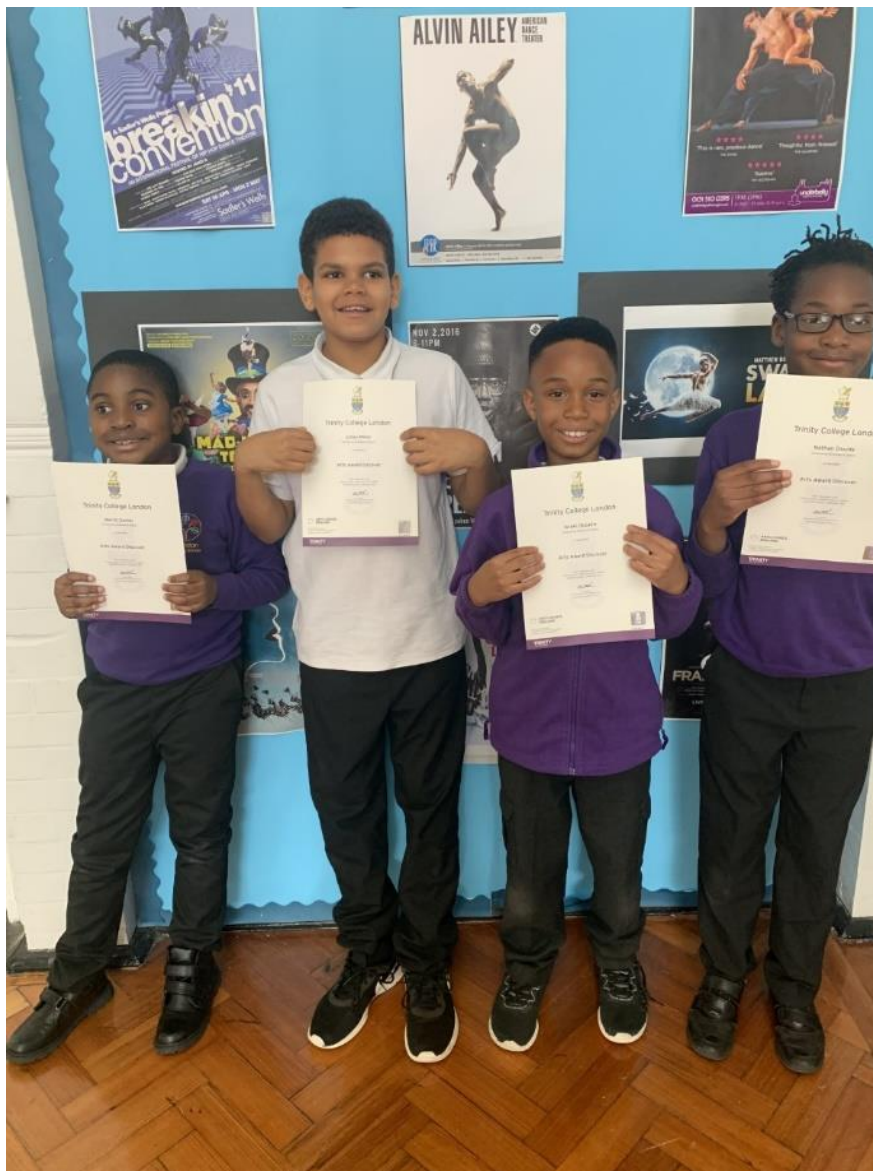
# Arts Award Success

13 children from the Resource Base have been successful in completing the Arts Award Discover. The creative Arts team launched the Arts Award last year with a small cohort of children to embark upon a personalised qualification in the Arts in conjunction with Greenwich Dance entitled “Black and British”.

The Arts Awards are nationally recognised qualifications which run at five levels: Discover, explore, Bronze, Silver and Gold.

The children created a portfolio of their artistic journey of work and took part in a final performance showcasing rap, choreo-poetry and parkour.

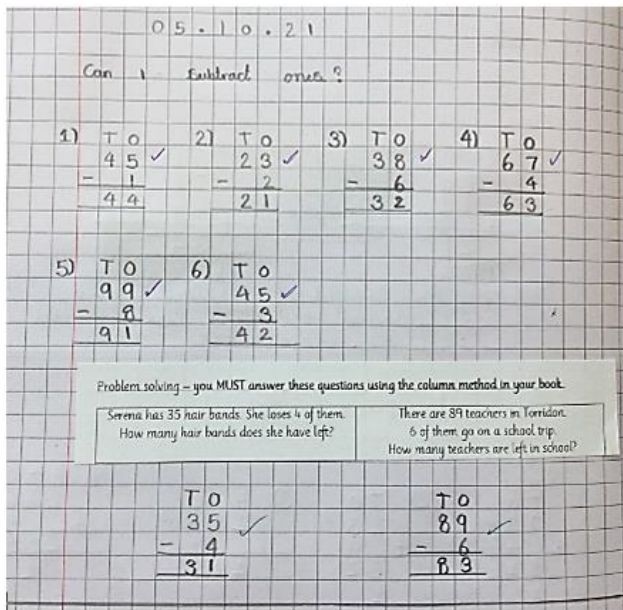
The children are working on the next level qualification this year in Art and Dance.



**CONGRATULATIONS!**

## Fantastic Learning

Year 3 have been working on their written addition methods. Isla from 3L has been working really hard in Maths using the column method. Also, year 4 had a great time this week learning all about the digestive system and some of our internal organs. Take a look at this fantastic example of their learning from 4CH!



## Year 6 Girls BelEve, Beam workshops

We are very excited to announce that Year 6 girls will have the opportunity to participate in a 6-week programme by BelEve, starting next term. This interactive programme inspires and empowers girls to maximise their potential and celebrate their achievement. The programme aims to build self-awareness, self-esteem and relationship skills, develop coping skills and resilience, as well as encourage setting goals for the future. Ultimately, their mission is to empower girls to become leaders of the world! We can't wait to work with them.

More details coming soon.





# Guinness book of Records



In May, Torridon pupils designed postage stamps as part of the Royal Mail competition. There were some phenomenal entries from our community. Congratulations to you all, as you are now part of the Guinness Book of Records!

## Message from Friends of Torridon PTA

Thank you to the old PTA committee for all their hard work and amazing fundraising projects. We have all seen the fantastic improvements around the school. We are delighted to take the baton and continue their wonderful work. We always need more helpers. If you would like to get involved please email

[friendsoftorridonpta@gmail.com](mailto:friendsoftorridonpta@gmail.com).

**HELP US  
FUNDRAISE**

## Christmas Card Orders

Thank you to all the parents that have already made orders for Christmas Cards – we have already raised over £200! Please remember to complete orders and return the artwork to your child's class teacher by **Tuesday 12<sup>th</sup> October**.

You have **3 days left** to place your order and help us raise funds. Please visit [www.apfsorders.co.uk](http://www.apfsorders.co.uk)



Help us fundraise and see your child's artwork transformed into cards, wrapping paper, gift tags or mugs!

- 1) To order please visit [www.apfsorders.co.uk](http://www.apfsorders.co.uk)
- 2) Input the artwork code found on the reverse of your child's artwork
- 3) Once ordered, please return your child's artwork to the school



## Keeping In Touch

Please remember to let us know if you or a member of your household receives a positive test result for COVID-19. We have a dedicated phone number for you to call if you need to inform us of a confirmed case within your household– **07376 358065**.

We also have a dedicated email address for any communication related to

COVID-19. You can contact us at the following email address:  
[covid@torridonprimary.lewisham.sch.uk](mailto:covid@torridonprimary.lewisham.sch.uk)



## Stars of the week



**Congratulations to these superstars for some amazing learning this week!**

Nursery	Ryan Ilakkiya	3S	Thiksga
RF	Uzair	4CH	Amar
RL	Petra	4CW	Mihir
RP	Inayah	4V	Skye
1BC	Amaya	5CR	James
1N	Deeshika	5CY	Aiden
1G	Ethan	5W	Wande
2G	Rome	6A	Noah
2L	Selina	6C	Jayden
2S	Hanna	6P	Sophie
3A	Akshika		
3L	Savain	Resource Base	Romel Ryan

## Dates For Your Diary

Thursday 14 <sup>th</sup> October	Individual and class photographs
Tuesday 19 <sup>th</sup> and Wednesday 20 <sup>th</sup> October	Individual parent and carer meetings with class teachers
Friday 22 <sup>nd</sup> October	INSET DAY
Monday 24 <sup>th</sup> October to Friday 29 <sup>th</sup> October	HALF TERM HOLIDAY
Monday 1 <sup>st</sup> November	BACK TO SCHOOL

## Year 6 School Journey

It is great to see how many of our children will be joining us on school journey in May 2022. Thank you to those parents and carers who attended the meeting about this visit earlier in the week. Please remember that the final deadline by which deposits should be paid is **Wednesday 13<sup>th</sup> October**.



## Community Events



invites you to our

### Free Monthly Fun Play Session

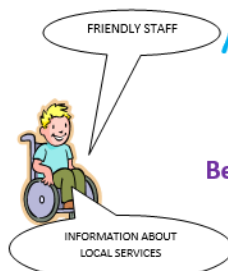
*for children aged 5-8 years  
with special educational needs*

on

**Monday, 18<sup>th</sup> October 2021**  
**at 10:30am-11:30am**

at

**Bellingham Leisure and Lifestyle Centre**  
**5 Randlesdown Road, Bellingham**  
**SE6 3BT**



This is a dedicated session for children aged 5-8 years only, and the fun play area will be closed to the public. To book a place please email [bcp@bcp.uk.net](mailto:bcp@bcp.uk.net) places will be allocated on a first come first served basis (30 places available).

For more information, please email [bcp@bcp.uk.net](mailto:bcp@bcp.uk.net) or call 020 8461 2213

Please note that the accompanying adult will be expected to stay and will be responsible for their child throughout the session. We request all adults wear a face covering, however this will not be enforced.



invites you to our

# Free Monthly Fun Play Session

for children under 5  
with special educational needs

on

**Monday, 18<sup>th</sup> October 2021**

**at 9:30am -10.30am**

at

**Bellingham Leisure and Lifestyle Centre  
5 Randlesdown Road, Bellingham  
SE6 3BT**



This is a dedicated session, and the fun play area will be closed to the public. To book a place please email [bcp@bcp.uk.net](mailto:bcp@bcp.uk.net) places will be allocated on a first come first served basis (30 places available).

For more information, please email [bcp@bcp.uk.net](mailto:bcp@bcp.uk.net) or call 020 8461 2213  
or call Pam (Lewisham Portage Worker) on 0783 4144 934

*Please note that the accompanying adult will be expected to stay and will be responsible for their child throughout the session. We request all adults wear a face covering, however this will not be enforced.*

## Early Years SEND Factor

Dear Families,

Come and join us at our virtual [Early Years SEND Factor drop-in](#) session this **Thursday 14<sup>th</sup> October, 10am – 11am** on ZOOM.

Next week we will be discussing the Education, Health and Care Needs Assessment (EHCNA) pathway.

- What is an Education, Health and Care (EHC) Plan
- What's an EHC assessment
- How to request an EHC assessment
- What happens when an assessment is requested (including time frames)
- What happens when an EHC Plan is issued

Click the link or image below to join from you mobile phone, electronic device or computer / laptop / tablet.





**THE EARLY YEARS SEND FACTOR**

INFORMATION, ADVICE AND SUPPORT FOR FAMILIES OF CHILDREN WITH SPECIAL EDUCATIONAL NEEDS AND/OR DISABILITIES

A welcoming, inclusive and supportive forum providing you with the opportunity to...

get the right support and the right time

be informed and empowered

speak to the professionals

find out about services and entitlements

Come and join us at our virtual drop-in sessions on the 2<sup>nd</sup> Thursday of each month | 10am-11am

Join Zoom Meeting

zoom

ID: 903 566 5535  
PW: 094671

Join Zoom Meeting

<https://us04web.zoom.us/j/9035665535?pwd=NDhCR01BNHIJQXIrU3pubkF5em5lQT09>

Meeting ID: 903 566 5535

Passcode: 094671

## Cheaper Train Tickets



We've put together a guide to booking family train tickets to help people find out how to get to your place as we've included ways they can save money on train tickets and child fare information.

Click on the link for more information: <https://www.thetrainline.com/trains/great-britain/family-train-tickets>